



ESPLANADE

ESPLANADE

A natural stone symbolising a centuries-old tradition, this material is used in the typical architecture of southern France.

Five neutral but strong and vibrant colours decorate elegant surroundings with contemporary charm, representing that eclectic style that pervades today's living spaces. The aesthetics, refined and enhanced by the large sizes, can also be appreciated in the multi-size installation schemes, ideal for giving a distinct character to the design of residential environments, and the Esplanade solutions with grip surface offer versatility, perfect for designing exteriors.



The welcoming atmosphere of a familiar place where it's always nice to come back to. Colours, shapes and materials linger in the memory and become a tangible reality, a symbol of the choices that create a personal style.



Corda 120x120



Corda 120x120



Corda 60x120 . Skirting Tile Corda 6,5x60 . WoWall White Leaf (comp. 2pz)





Corda 60x120 . R11 19 mm rett



The welcoming atmosphere of a familiar place where it's always nice to come back to. Colours, shapes and materials linger in the memory and become a tangible reality, a symbol of the choices that create a personal style.



Argento 60x60 . R11 Mosaic Bricks Argento 24x40 .



Ebano 100x100.



Ebano 100x100 . Mosaic Hexagon Ebano 25x30 .





Argento 60x120 .



The freedom to create
following one's inspiration,
an architecture of
possibilities to build
without limits.

Elements from different
periods shape a present
to be experienced fully
every day.



Tan 60x120 . 24"x48" rett



Tan Modular 40: 60x120 _ 60x60 _ 30x60 .



Tan Modular 40: 60x120 _ 60x60 _ 30x60



Mosaic Hexagon Sabbia 25x30 _ Skirting Tile Sabbia 6,5x100



Sabbia 120x120 ... Skirting Tiles Sabbia 6,5x60 . WOWall1 Monkey (comp. 2pz)



Sabbia Modular 40 R11: 30x60 - 60x60 - 60x120

DIFFERENT COLOURS COUNTLESS PATTERNS

Five colours, five sizes and two surface finishes are designed to make floors and cover walls in spaces with different architectural vocations. Three sizes with grip finish and 10 mm thickness and two more solutions with 19mm thickness are dedicated to the design of outdoor spaces. ESPLANADE interprets with modern taste a classic and versatile aesthetic, to be used also for modular and multi-size installation schemes in order to define the style of residential and public spaces.

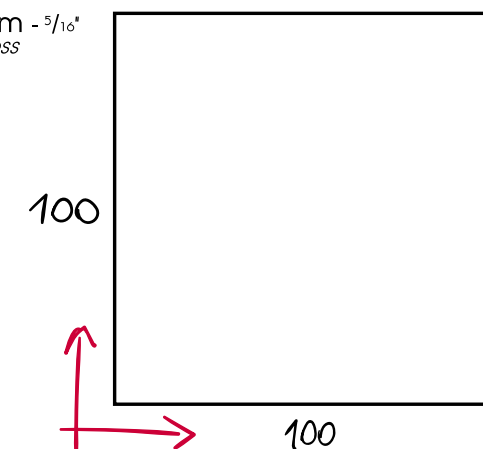


5 SIZES

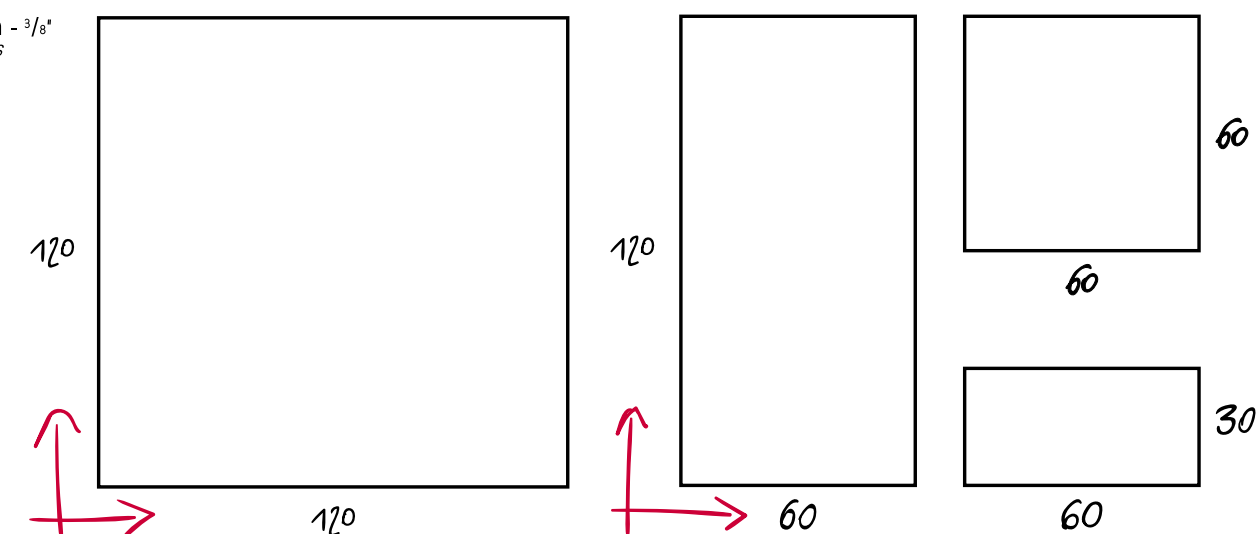
100x100 . 40"x40" _ 120x120 . 48"x48" _ 60x120 . 24"x48" _ 60x60 . 24"x24" _ 30x60 . 12"x24"



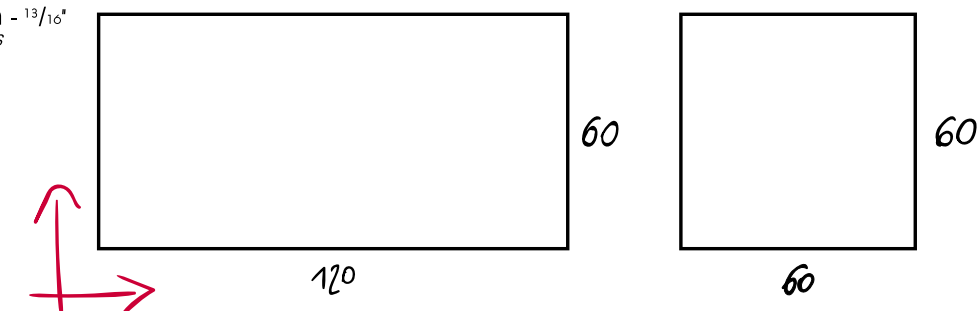
8,5 mm - $\frac{5}{16}$ "
thickness



10 mm - $\frac{3}{8}$ "
thickness



19 mm - $\frac{13}{16}$ "
thickness



ESPLANADE



SABBIA



100x100 . 40"x40" rect

8,5 mm - ⁵/₁₆"
thickness

CORDA

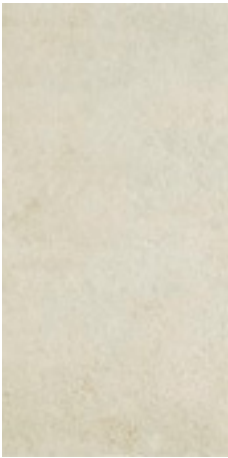


100x100 . 40"x40" rect

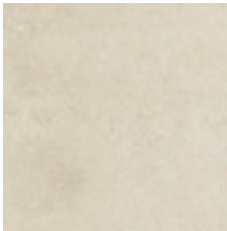
8,5 mm - ⁵/₁₆"
thickness



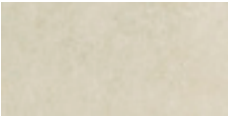
120x120 . 48"x48" rect



60x120 . 24"x48" rect
60x120 . 24"x48" rect R11



60x60 . 24"x24" rect
60x60 . 24"x24" rect R11



30x60 . 12"x24" rect
30x60 . 12"x24" rect R11

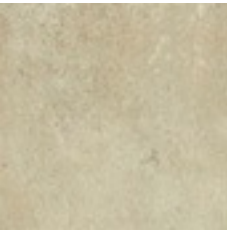
10 mm - ³/₈"
thickness



120x120 . 48"x48" rect



60x120 . 24"x48" rect
60x120 . 24"x48" rect R11



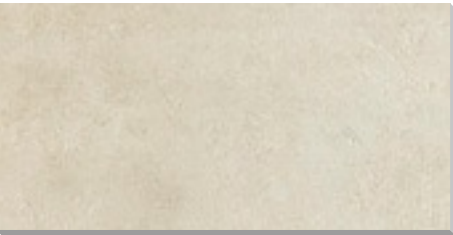
60x60 . 24"x24" rect
60x60 . 24"x24" rect R11



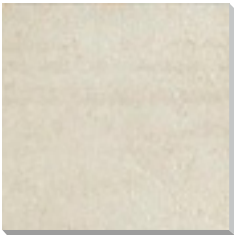
30x60 . 12"x24" rect
30x60 . 12"x24" rect R11

10 mm - ³/₈"
thickness

19MM

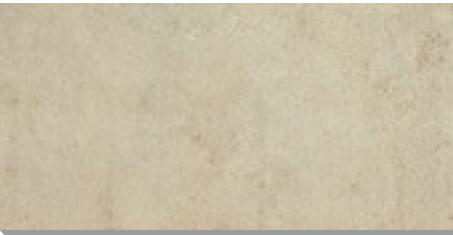


60x120 . 24"x48" rect R11



60x60 . 24"x24" rect R11

19 mm - ¹³/₁₆"
thickness



60x120 . 24"x48" rect R11



60x60 . 24"x24" rect R11

19 mm - ¹³/₁₆"
thickness

ESPLANADE



TAN

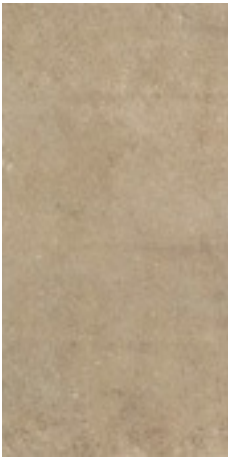


100x100 . 40"x40" rect

 **8,5 mm** - ⁵/₁₆"
thickness



120x120 . 48"x48" rect



60x120 . 24"x48" rect



60x60 . 24"x24" rect



30x60 . 12"x24" rect

 **10 mm** - ³/₈"
thickness

ARGENTO



100x100 . 40"x40" rect

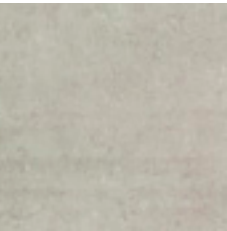
 **8,5 mm** - ⁵/₁₆"
thickness



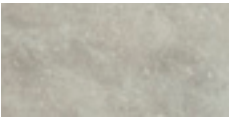
120x120 . 48"x48" rect



60x120 . 24"x48" rect
60x120 . 24"x48" rect R11



60x60 . 24"x24" rett
60x60 . 24"x24" rett R11



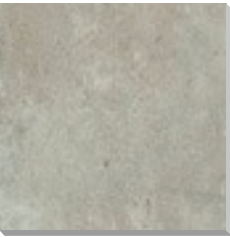
30x60 . 12"x24" rett
30x60 . 12"x24" rett R11

 **10 mm** - ³/₈"
thickness

19MM



60x120 . 24"x48" rect R11



60x60 . 24"x24" rect R11

 **19 mm** - ¹³/₁₆"
thickness

ESPLANADE



EBANO



100x100 . 40"x40" rect

8,5 mm - 5/16" thickness



120x120 . 48"x48" rect



60x120 . 24"x48" rect



60x60 . 24"x24" rect



30x60 . 12"x24" rect

10 mm - 3/8" thickness

Mosaics

30x30 - 12"x12" Sheet



Mosaic Sabbia 5x5 . 2"x2" rect



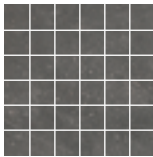
Mosaic Corda 5x5 . 2"x2" rect



Mosaic Tan 5x5 . 2"x2" rect



Mosaic Argento 5x5 . 2"x2" rett



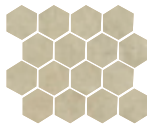
Mosaic Ebano 5x5 . 2"x2" rett

10 mm - 3/8" thickness

25x30 - 10"x12" Sheet



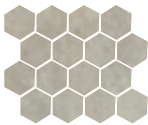
Mosaic Hexagon Sabbia 25x30 . 10"x12" rect



Mosaic Hexagon Corda 25x30 . 10"x12" rect



Mosaic Hexagon Tan 25x30 . 10"x12" rect



Mosaic Hexagon Argento 25x30 . 10"x12" rect



Mosaic Hexagon Ebano 25x30 . 10"x12" rect

24x40 - 9 7/16"x16" Sheet



Mosaic Bricks Sabbia 24x40 . 9 7/16"x16"



Mosaic Bricks Corda 24x40 . 9 7/16"x16"



Mosaic Bricks Tan 24x40 . 9 7/16"x16"



Mosaic Bricks Argento 24x40 . 9 7/16"x16"



Mosaic Bricks Ebano 24x40 . 9 7/16"x16"

Special Trims

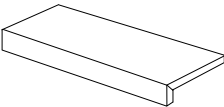


Skirting 6,5x100 . 2 9/16"x40" rect

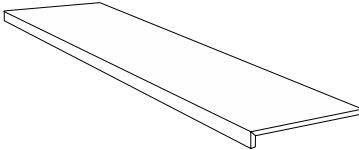
8,5 mm - 5/16" thickness



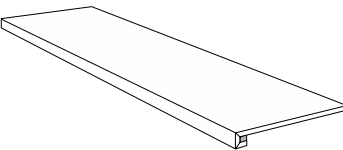
Skirting 6,5x60 . 2 9/16"x24" rect



Assembled Elemento L' Step 15x60x5 . 6"x24"x2" rect R11



Straight Edge Step 30x120x3,3 . 12"x48"x1 5/16" rect



Assembled Square Edge Step 30x120x3,3 . 12"x48"x1 5/16" rect

10 mm - 3/8" thickness

Complete range

19MM 60x120 . 24"x48" _ 60x60 . 24"x24"

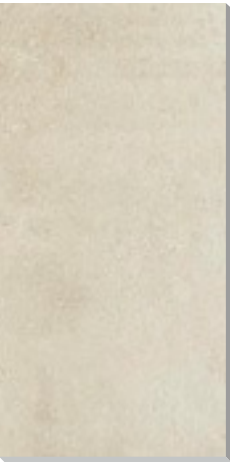
ESPLANADE IN&OUT



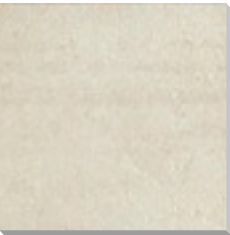
SABBIA

CORDA

ARGENTO



60x120 . 24"x48" rect R11



60x60 . 24"x24" rect R11



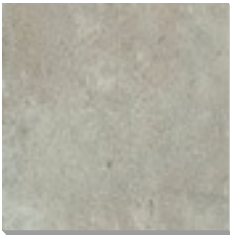
60x120 . 24"x48" rect R11



60x60 . 24"x24" rect R11



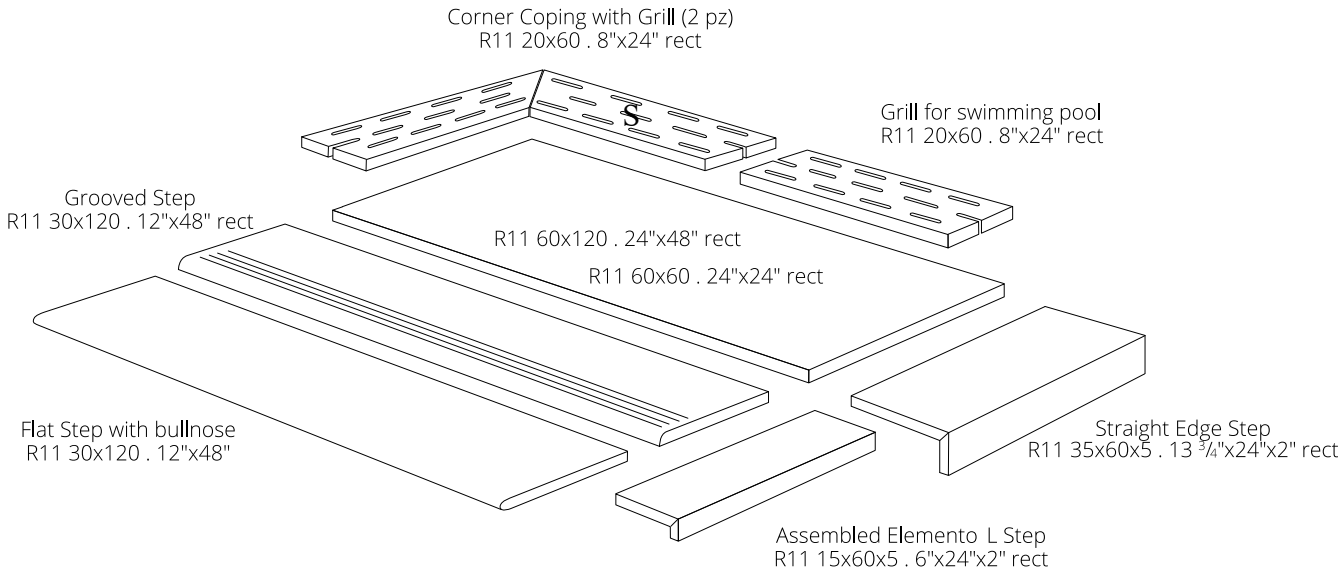
60x120 . 24"x48" rect R11



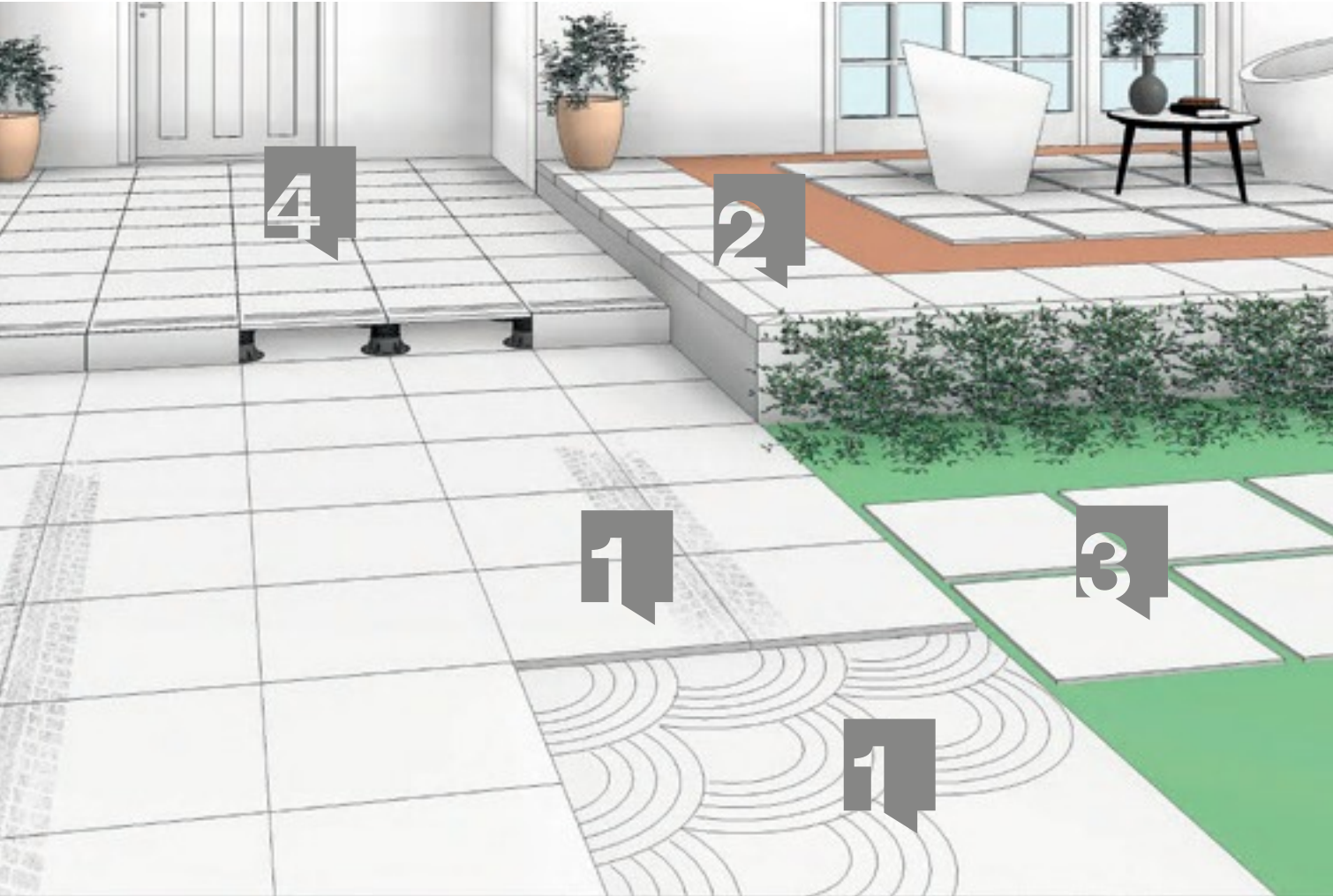
60x60 . 24"x24" rect R11

19 mm
spessore
thickness
épaisseur
stärke
толщина

Special Trims



Complete range



- 1

Traditional laying
laying with glue.
- 3

Dry Installation onto grass.
- 1

Laying with glue for
carriageable path.
- 4

Installation using a raised
structure.
- 2

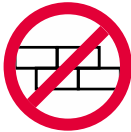
Dry installation onto
gravel or sand.
- 4

Installation using a
draining raised structure.

Packing

	BOX			PALLET		
	PZ	SQM	KGS	BOXES	SQM	KGS
100x100 . 40"x40" rett	1	1,00	20,65	42	42,00	900
120x120 . 48"x48" rett	1	1,44	32,00	40	57,60	1.340
60x120 . 24"x48" rett/rett R11	2	1,44	32,00	36	51,84	1.168
60x60 . 24"x24" rett/rett R11	3	1,08	24,00	40	43,20	976
30x60 . 12"x24" rett/rett R11	6	1,08	23,80	40	43,20	970
60x120 . 24"x48" rettR11 19mm	1	0,72	30,60	36	25,92	1.118
60x60 . 24"x24" rett R11 19mm	2	0,72	30,60	32	23,04	996

TECHNICAL NOTES
All sizes are nominal. Rovic Tiles reserves the right to modify the information and the characteristics illustrated in this catalogue (which are in any case not legally binding) at any moment. The colours and appearance features of the products are as close as possible to reality, within the limitation of the printing process.



When laying, you are recommended not to stagger the strips by more than 25% of the length.

EN 14411:2012
Dry pressed ceramic tile
with water absorption E_w ≤ 0,5%,
for internal and external floorings.



	Physical / chemical properties		Standard of test	Mean value	
	Dimensions		ISO 10545 - 2		
	Surface appearance			≥ 95%	
	Length and width	W		± 0,5%	
		± 2 mm		± 0,5% ± 2 mm	
	Thickness			± 5% ± 0,5 mm	
	Straightness of sides			± 0,3% ± 1,5 mm	
	Rectangularity		± 0,3% ± 1,5 mm		
	Surface flatness		ISO 10545-2	± 0,3% ± 1,5 mm	
			ASTM C 485	± 0,4%	
	Shade variations				SLIGHT VARIATION
	Water absorption		ISO 10545 - 3	E ≤ 0,1 % Bla GL	
	Frost resistance		ISO 10545 - 12	Resistant	
	Resistance to thermal shock		ISO 10545 - 9	Resistant	
	Crazing resistance of glazed tiles		ISO 10545 - 11	Resistant	
	Scratch hardness (MOHS scale)		EN 101	MOHS > 6	
	Resistance to surface abrasion of glazed tiles		ISO 10545 - 7	Ebano, Tan: Class 3	Argento, Corda, Sabbia: Class 4
	Resistance to household chemicals		ISO 10545 - 13	Class A	
	Resistance to low concentrations of acids and bases			Class LA - HA	
	Resistance to stains of glazed tiles		ISO 10545 - 14	Class 5	
	Bending strength	Modulus of rupture	ISO 10545 - 4	S ≥ 1300 N	
		R ≥ 35 N/mm ²			
	Anti-slip properties / Static coefficient of friction		DIN 51130 (no lux/lapp)	R10	R11
			B.C.R.A. REP. CEC. 6/81 (no lux/lapp)	0,40 ≤ ρ ≤ 0,74	
			DIN 51097 (no lux/lapp)	Class B	Class C
			DCOF Acu Test (no lux/lapp)	ρ ≥ 0,42	



ROVIC TILES

Head Office:
E6 Chaucer Business Park
Watery Lane
Kemsing
TN15 6YP
01732 763167

51 High Street
West Malling
ME19 6QH
01732 848250

367 Blandford Road
Beckenham
BR3 4NW
020 8658 7272

www.rovic.co.uk